



PHASED ARRAY

PROBES

WEDGES AND
DELAY LINES

ADAPTERS

IMG Ultrasuoni manufactures all main models of phased array probes and the relevant wedges, all of it done in its workshop.

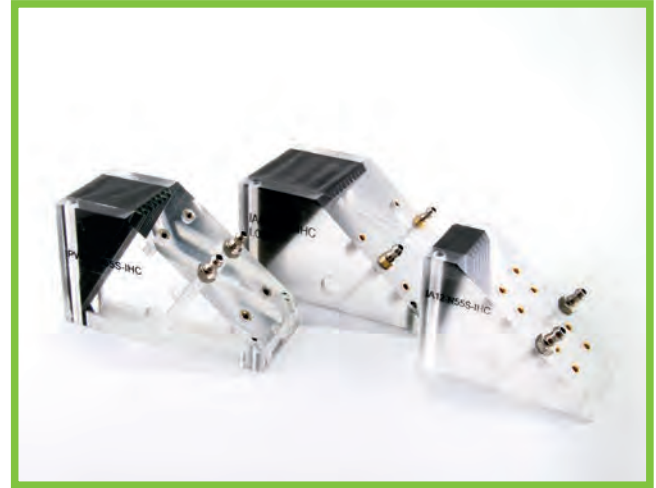


MODEL	FREQUENCY	NUMBER OF ELEMENTS	PITCH	ELEVATION	CABLE LENGTH	CONNECTOR TYPE	CASE SIZE
	[MHZ]		[mm]	[mm]			
AT24391 DUAL (1:16_33:48)	2,25	16	2	16	5	IPEX	DUAL
AT25078 DUAL (1:16 _17:32)	2,25	16	2	16	5	IPEX	DUAL
AT25090	2,25	64	0,75	12	5	IPEX	A2
AT25201	5	64	0,75	10	5	IPEX	A2
AT25250	5	64	0,6	10	5	IPEX	A2
AT25251	10	32	0,31	7	5	IPEX	A1
AT25330	7,5	64	0,6	10	5	IPEX	A2
AT25331	7,5	32	0,31	7	5	IPEX	A1
AT25522	7,5	16	0,5	10	2,5	IPEX	A15
AT25698	7,5	16	0,6	10	5	IPEX	A1
AT25699	7,5	16	0,5	10	5	IPEX	A15
AT25746	4	15	1,6	15	0,6	IPEX	A2
AT25859	3,5	128	1	6	5	IPEX	SPECIAL
AT26032	2,25	16	2	16	5	IPEX	SPECIAL
AT26167	5	16	0,6	10	5	IPEX	A1
AT26682	3,5	16	1,6	16	5	IPEX	A3
AT27033	10	32	0,25	10	5	IPEX	A16
AT27034	2,25	16	0,5	10	5	IPEX	A15
AT27174	1,5	16	2,8	26	5	IPEX	A4
AT27175	2,25	32	0,75	24	5	IPEX	A5
AT27599	5	16	1,6	16	5	IPEX	A3
ATI28595	2,25	16	0,6	10	5	IPEX	A1

Range of phased array probes of IMG production.

It includes the widest range of transducers for the phased array inspection, supplied with 16-element up to 128 elements with frequencies ranging from 1 MHz up to 10 MHz.

All the probes come with an integrated cable and can employ any kind of different wedges. Low profile probes are also part of the IMG product line, usable on the Circ-it Scanner.



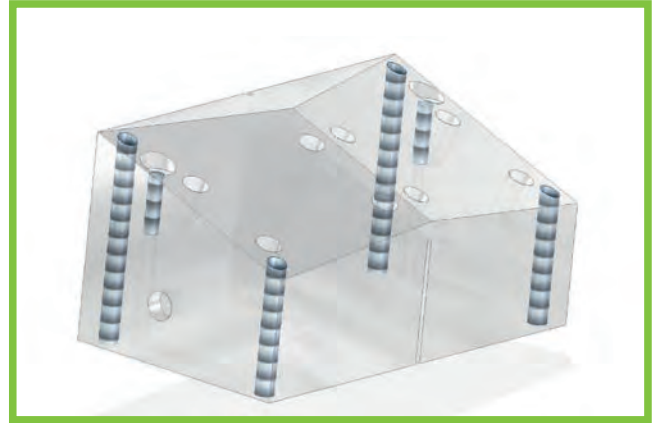
MODEL	REFRACTED ANGLE	L	W	H
IA1 N55S IHC	55° S	40	30,5	16,5
IA1 N60S IHC	60° S	40	30,5	16,5
IA1 N55L IHC	55° L	40	28,2	20,7
IA1 N60L IHC	60° L	40	28,2	20,7
IA1 0°	0° L	40	30,5	X
IA2 N55S IHC	55° S	40	68,5	44,2
IA2 N60S IHC	60° S	40	68,5	44,2
IA2 N55L IHC	55° L	40	82	66
IA2 N60L IHC	60° L	40	82	66
IA2 0°	0° L	40	60	X
IA3 N55S IHC	55° S	50	58	29
IA3 N60S IHC	60° S	50	58	29
IA3 N55L IHC	55° L	50	53	40
IA3 N60L IHC	60° L	50	53	40
IA3 0°	0° L	50	50	X
IA4 N55S IHC	55° S	55	86	45,2
IA4 N60S IHC	60° S	55	86	45,2
IA4 N55L IHC	55° L	55	84	66
IA4 N60L IHC	60° L	55	84	66
IA4 0°	0° L	55	60	X
IA5 N55S IHC	55° S	55	48	28
IA5 N60S IHC	60° S	55	45,5	28
IA5 N55L IHC	55° L	55	40	41,5
IA5 N60L IHC	60° L	55	40	41,5
IA5 0°	0° L	55	40	X
IA15 N60S IH	60° S	22	18	11,6

All wedges for phased array probes are available in standard refracted angles of 0°, 55°, and 60° in steel for angle-beam inspection from 30° to 70°, SW or LW. Screw-mounted for a tight probe fixing onto the wedge, IHC wedges are conceived to improve the quality of inspection: irrigation, mounting holes to work with any kind of scanners and carbide pins to increase wear resistance. IMG can manufacture wedges according to the customer's drawings and specifications.

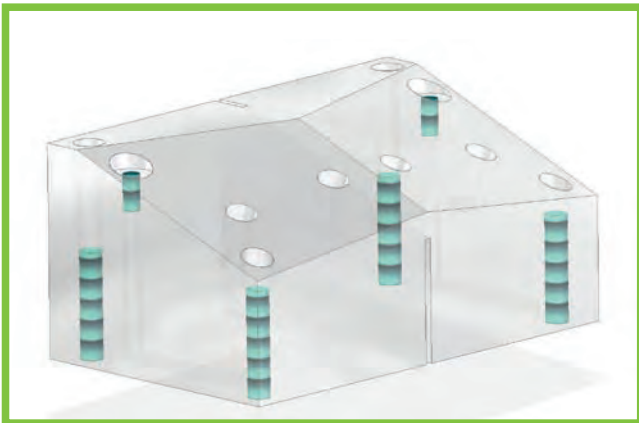
Thanks to over thirty years of experience on the field of ultrasonic non-destructive testing, IMG Ultrasuoni can design and implement any type of special wedges, for automatic and non-automatic systems.



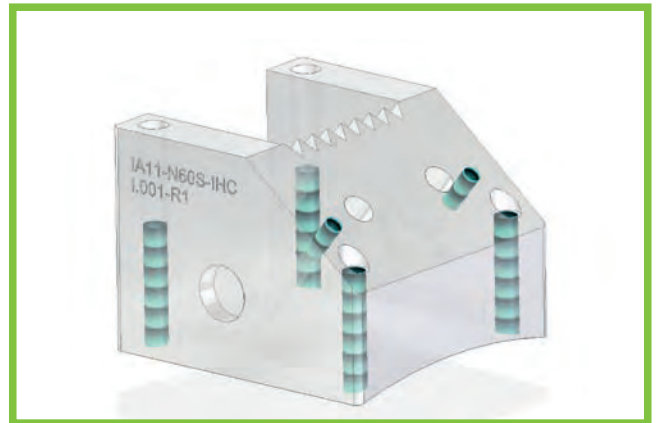
IA00



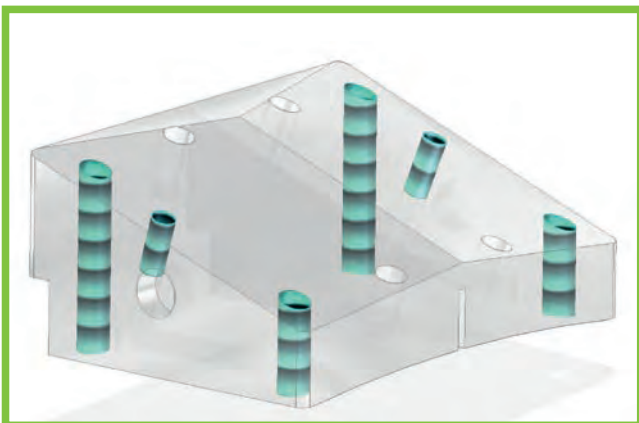
IA3 DOUBLE



IA11 DOUBLE



IA 11 SINGLE



IA17 DOUBLE



IBWX 354 A



MODEL	CONNECTORS
SPLITTER 32:32 I-PEX	FROM IPEX 1:64 TO DUE IPEX 1:32_33:64
SPLITTER 64:64 I-PEX	FROM IPEX 1:128 TO DUE IPEX 1:64_65:128
SPLITTER PA/LEMO 00	FROM CONNECTOR PA TO LEMO 00
CONNECTOR I-PEX	TO CONNECT PROBES TO TOOLS SONATEST AND OMNISCAN/FOCUS PX
CONNECTOR I-PEX QUICK LATCH	TO CONNECT PROBES TO TOOLS SONATEST AND OMNISCAN/FOCUS PX
CONNECTOR HYPERTRONICS	TO CONNECT PROBES TO TOOLS ZETEC DYNARAY AND PIPEWIZARD
D78	TO CONNECT PROBES TO TOOLS TECHNOLOGY DESIGN HANDYSCAN
ITT CANNON	TO CONNECT PROBES TO TOOLS TECHNOLOGY DESIGN FOCUS
CONNECTOR PHASOR	TO CONNECT PROBES TO TOOLS GE PHASOR
CONNECTOR ZETEC	TO CONNECT PROBES TO TOOLS ZETEC DYNARAY AND PIPEWIZARD

IMG Ultrasuoni can supply all kinds of phased array adapters and splitters, that can be used on all major Phased array instruments on the market.