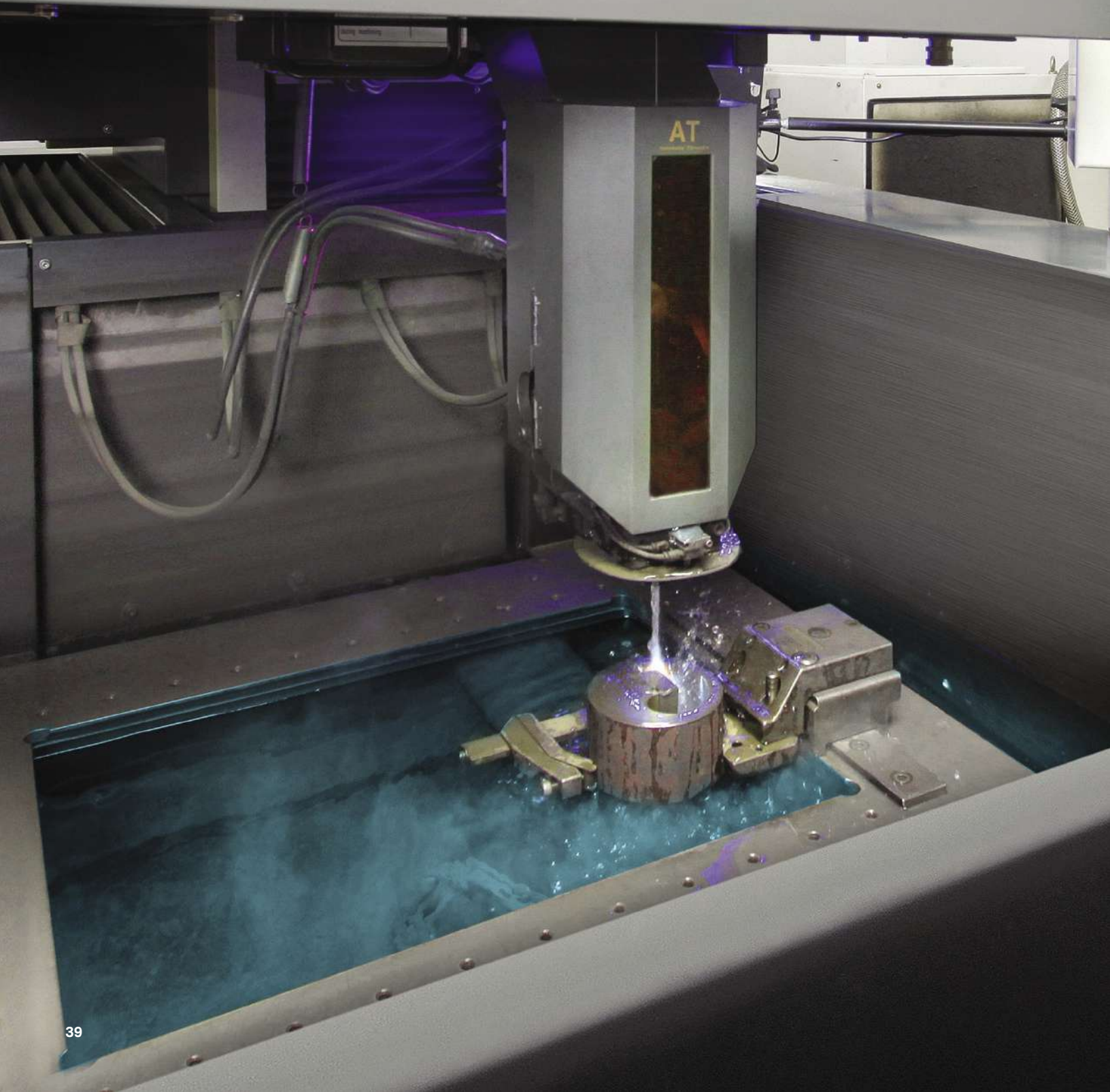


FA20

CALIBRATION BLOCKS



Individual or sets of ultrasonic and eddy current calibration blocks to suit all site and laboratory inspection requirements.

We manufacture all regular calibration blocks to international standards and any custom designed specialist pieces all to tolerances of +/- 0.1mm.

Our capabilities include NDE, mechanical inspection, 3D CAD, electrical discharge machining (EDM), specialist welding, cladding overlay, machining, bending/rolling and heat treatment.

We manufacture the following reflector types:

- Slots
- Notches
- Side drilled holes
- Flat bottom holes

For a quotation, please supply specification, detailed drawings, code requirements and material type/grade.

Recommended for

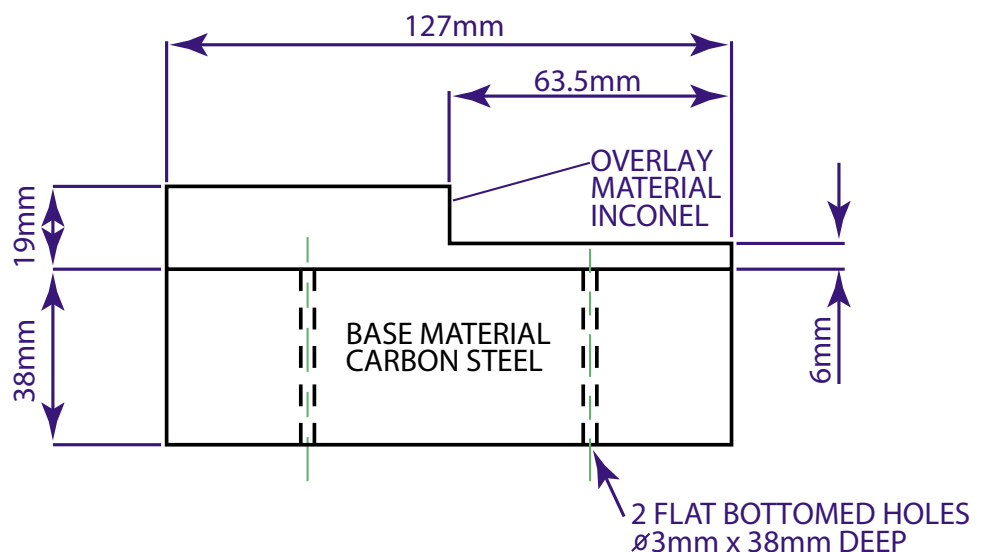
- Calibration of timebase and gain settings
- Calibration of angles for shear wave inspection
- Constructing DAC/TCG curves
- Calibration for specifically designed wedges e.g. boiler tube probes
- Calibration inspection to codes e.g. ASME V
- Evaluation of dominant frequency, pulse length and dead zone

Materials

- Carbon steel
- Stainless steel
- Aluminum
- Custom alloy

Methods

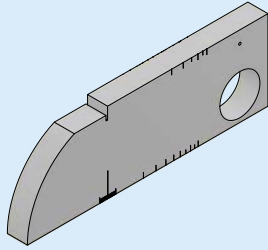
- Ultrasonic testing
- Eddy current testing



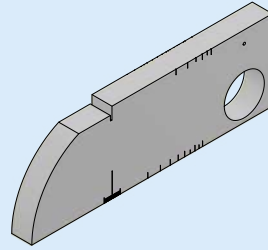
An example of a custom clad block



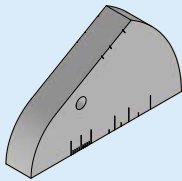
SI-CB-01 – No.1 block



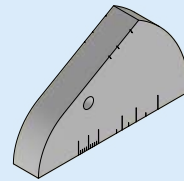
SI-CB-02 – V1/A2 block



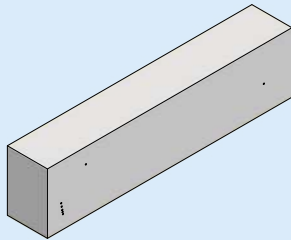
SI-CB-03 – No.2 block



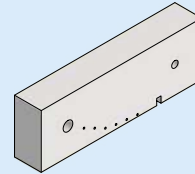
SI-CB-04 – V2/A2 block



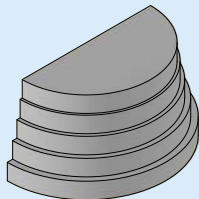
SI-CB-05 – A5/BCB/IOW block



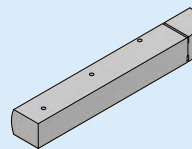
SI-CB-06 – A6 block



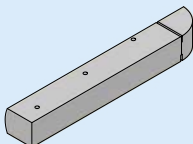
SI-CB-07 – A7/RTB block



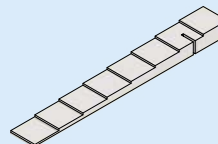
SI-CB-08 – MU block



SI-CB-09 – TBR 2 125 block

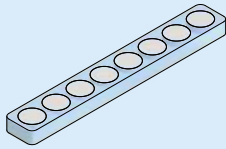


SI-CB-10 – LSW 1-20 (1-8) block

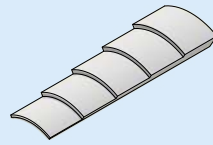




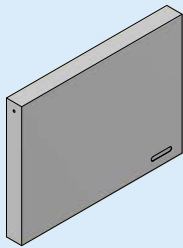
SI-CB-11 – LSW/M block



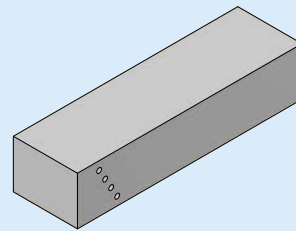
SI-CB-12 – CSW block



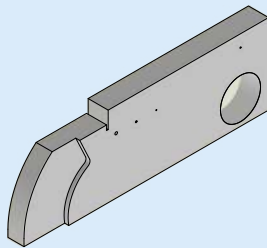
SI-CB-13 – ASME V block



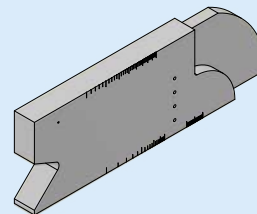
SI-CB-14 – DAC block



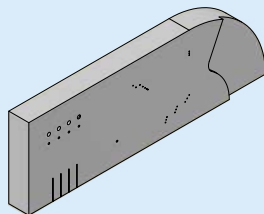
SI-CB-15 – IIW Type 1/2 block



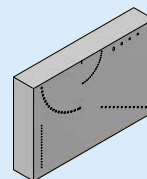
SI-CB-16 – ISO 19675 block



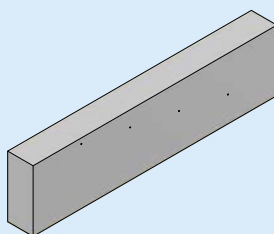
SI-CB-17 – ASTM E 2491 type A Block



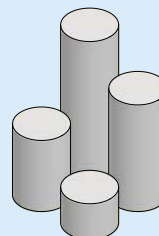
SI-CB-18 – ASTM E 2491 type B block



SI-CB-19 – NavShip

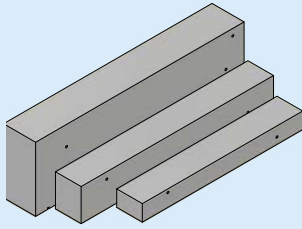


SI-CB-20 – ASTM E 127 blocks

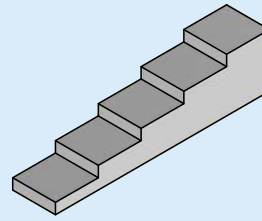




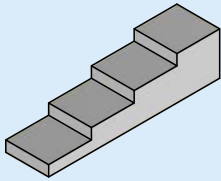
**SI-CB-21 - US 319/21 /
ACO-0/1/2/3 block**



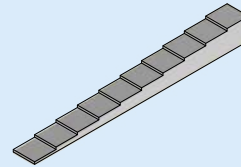
SI-CB-22 - LSW 5-25 block



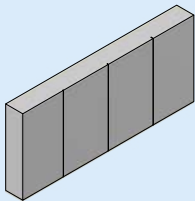
SI-CB-23 - LSW 5-20 block



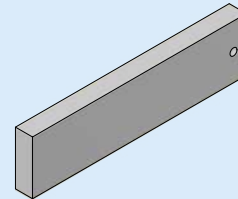
SI-CB-24 - LSW 2-20 block



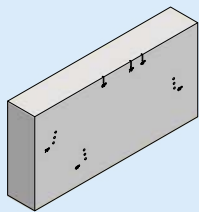
SI-CB-25 - EC block



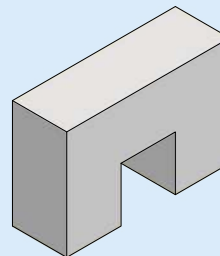
SI-CB-26 - EC Weldscan block



SI-CB-27 - AWS Res block



SI-CB-28 - AWS DC block



SI-CB-29 - Px block

